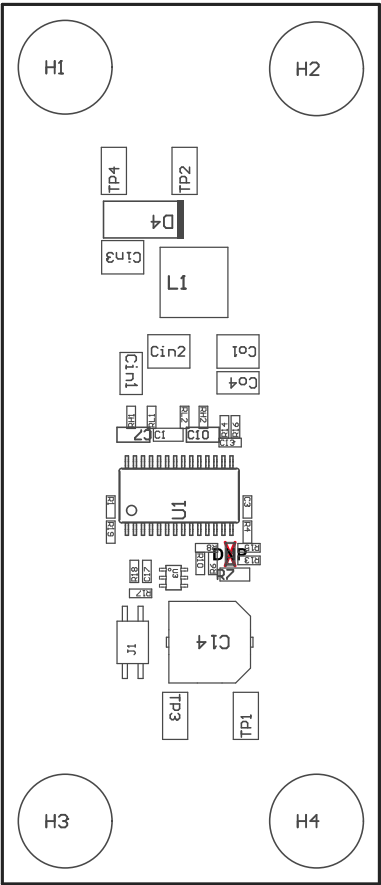


ZZ1 ■ These assemblies are ESD sensitive, ESD precautions shall be observed.

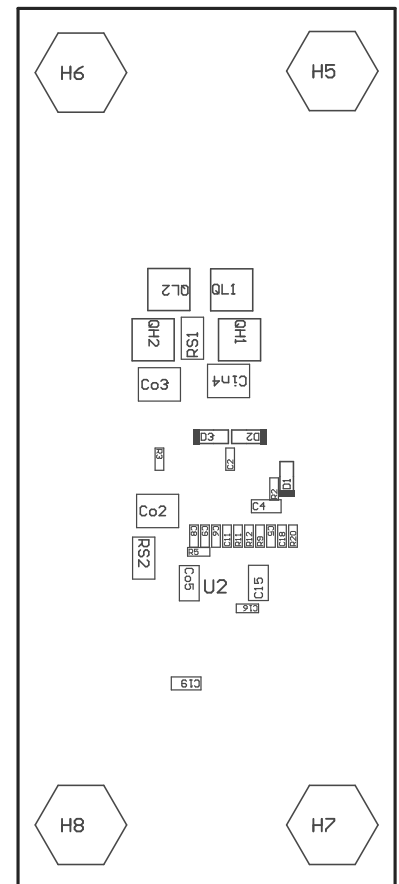
**Z22** ■ These assemblies must be clean and free from flux and all contaminants. Use of no clean flux is not acceptable.

ZZ3 ■ These assemblies must comply with workmanship standards IPC-A-610 Class 2, unless otherwise specified.



COMPONENTS MARKED 'DNP' SHOULD NOT BE POPULATED.  
ASSEMBLY VARIANT: 001

PCB VIEWED FROM TOP SIDE	BOARD #: PMP10726	REV: REVC	SUN REV: Not In VersionControl
	TID #: PMP10726		
PLOT NAME = Top Assembly Drawing	GENERATED : 8/1/2016 11:42:55 AM		TEXAS INSTRUMENTS



COMPONENTS MARKED 'DNP' SHOULD NOT BE POPULATED.  
 ASSEMBLY VARIANT: 001

PCB VIEWED FROM BOTTOM SIDE	BOARD #: PMP10726	REV: REVC	SVN REV: Not In VersionControl
	TID #: PMP10726		
PLOT NAME = Bottom Assembly Drawing	GENERATED : 8/1/2016 11:42:56 AM		TEXAS INSTRUMENTS